

Wendell Vaughn
ARCHITECTURE+PLANNING



PATTERNS of PLACE

PROFILE

Wendell Vaughn has been acknowledged for his contribution in Practice Leadership, Design and Planning innovation with a proven history of strategic practice development and achievement. His clients' projects have been recognized within California, nationally, and internationally for responsive design consciousness, environmental contribution, and cost effective realization.



Wendell Vaughn, AIA, LEED BD+C
Wendell Vaughn Architecture + Planning
Founding Partner
Managing/Design Principal

\$3.3 billion of Projects Costs Services
Recognized Design/Practice Leadership
Innovative Planning Implementation
Environmental Design Recognition
20 years as a Principal, 30 years
experience
Invited Speaking Engagements

FIRM LEADERSHIP

Vaughn Architecture + Planning
Founder - Managing/Design Principal

Perkins + Will
Educational Practice/Design Principal
North America Western Regional Leader
National Practice Development
International Practice Development

the Blurock Partnership
Design Principal

Thomas Blurock Architects
Project Architect

Wendell Vaughn

ARCHITECTURE+PLANNING

Wendell Vaughn, AIA, LEED BD+C
Principal, Founding Partner

626-695-4225

wvaughn@vaughnarc.com
VaughnArchitecturePlanning

email
web

CIVIC ARCHITECTURE
EDUCATIONAL ENVIRONMENTS
PLANNING
BUILDING REVITALIZATION

Monograph

Wendell Vaughn
ARCHITECTURE

IMPRESSIONS
.....RESPONSE



We are inspired and driven by our commitment to an architectural practice based on the principles of relevance, agility, and thoughtful contributions to our societies and environment. We are passionate about the goals of each client and our collective global community. We strive to plan and create places that enhance, support and inspire. Our practice approach and process is based on a sincere commitment to listen, collaborate, inform, and together make a difference in the lives of those we serve.

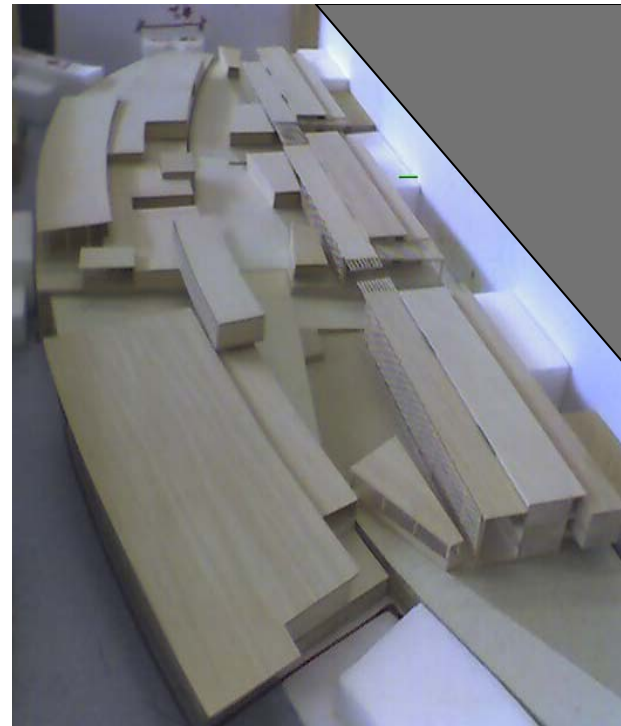




ATRISCO HERITAGE ACADEMY
Albuquerque, New Mexico

..”The jury was unanimous in it’s decision to award the 2009 Grand Prize for the National School Boards Exhibition of School Architecture.” The evaluation jury credits this design as a big step forward in the development of a 21st Century School. This project is a model of how high schools should be built for today and the future”.

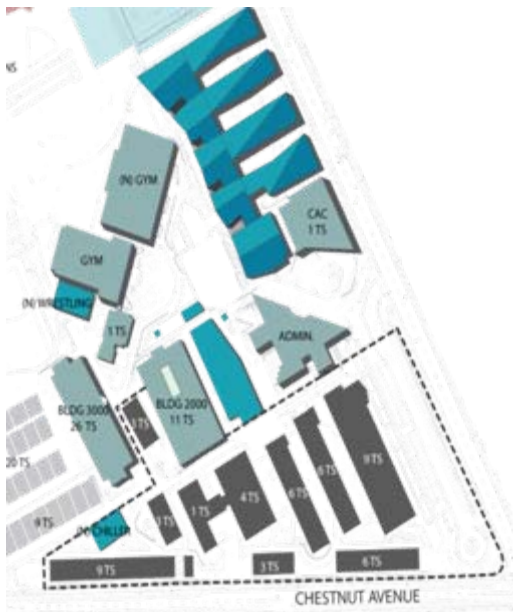
*National School
Boards Association 2009 GRAND PRIZE*



*PLACEMENT within
the Rio Grande River Valley site*



TEXTURE, PATTERNS, and CULTURE of PLACE



PATTERNS of WAETHER and GLOBAL POSITION

**CARLSBAD HIGH SCHOOL
CARLSBAD, CA**



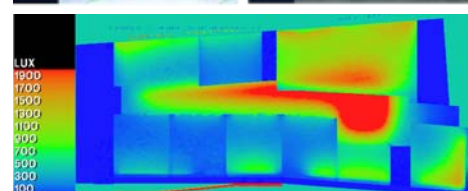
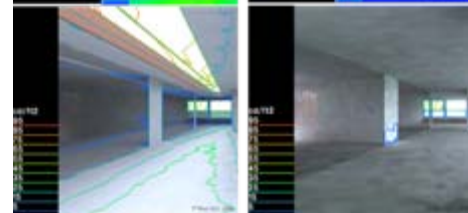
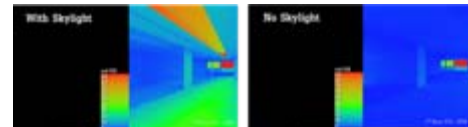
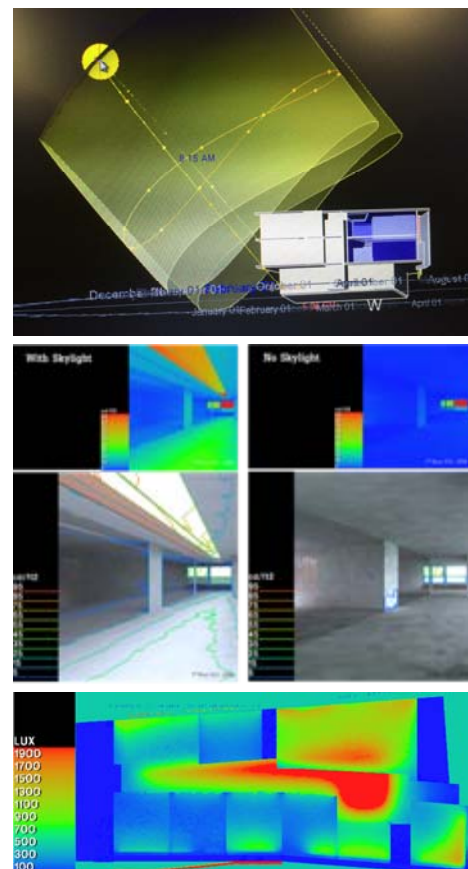
RESPONDING to the ENERGY of ENVIRONMENTAL CONTEXT



PHASED CONSTRUCTION
within an existing and
operating High School Campus



WESTPARK HIGH SCHOOL
Roseville, CA





Valley Floor "Fabric"

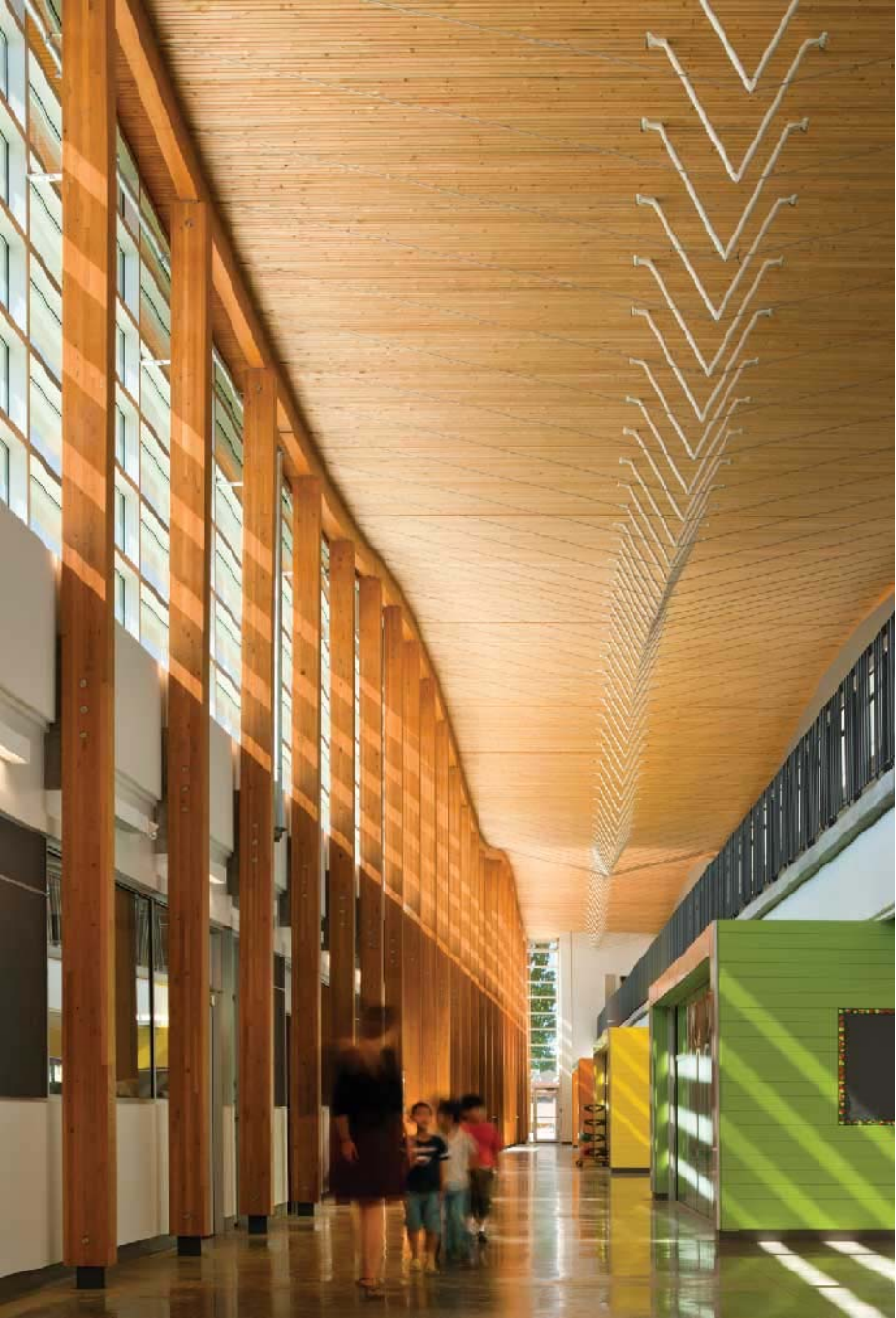
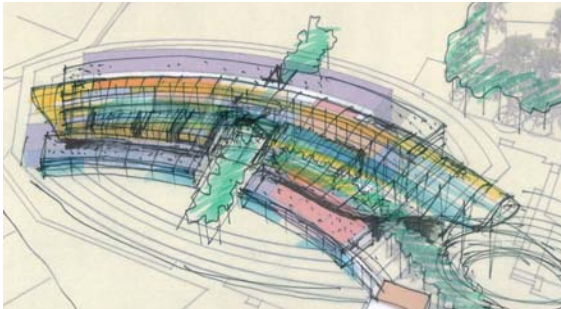


Heritage



LOMBARDI K-8 CHARTER SCHOOL
Porterville, CA

BRIGHOUSE ELEMNTARY SCHOOL
Richmond BC, Canada

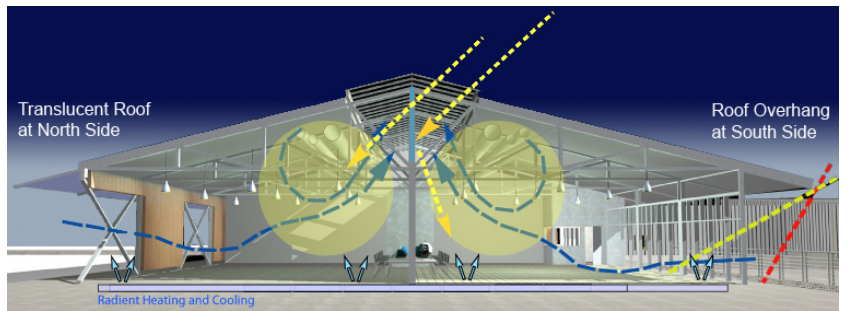




PITT RIVER MIDDLE SCHOOL
Coquitlam, BC, Canada

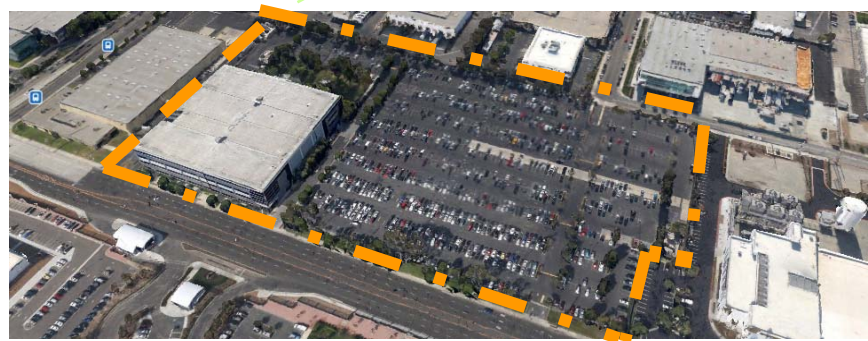


CREEK VIEW RANCH K-8 SCHOOL
Roseville, CA



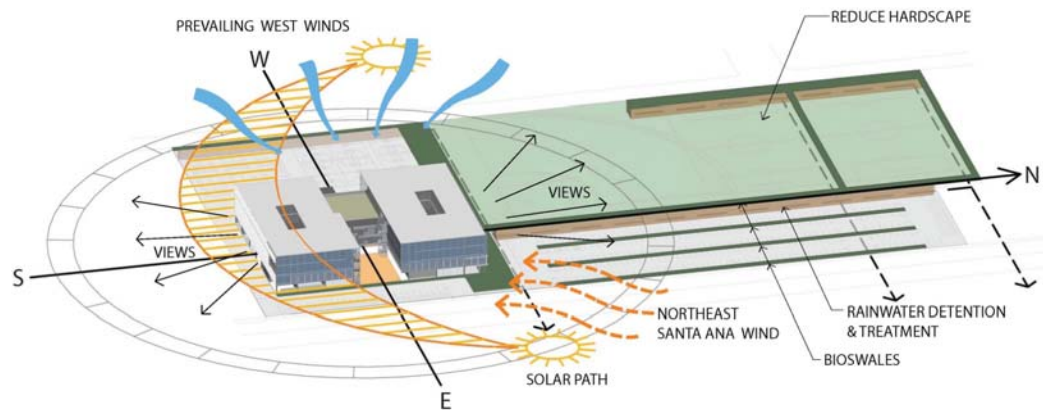


FRANK del OLMO ELEMENTARY SCHOOL
Los Angeles, CA



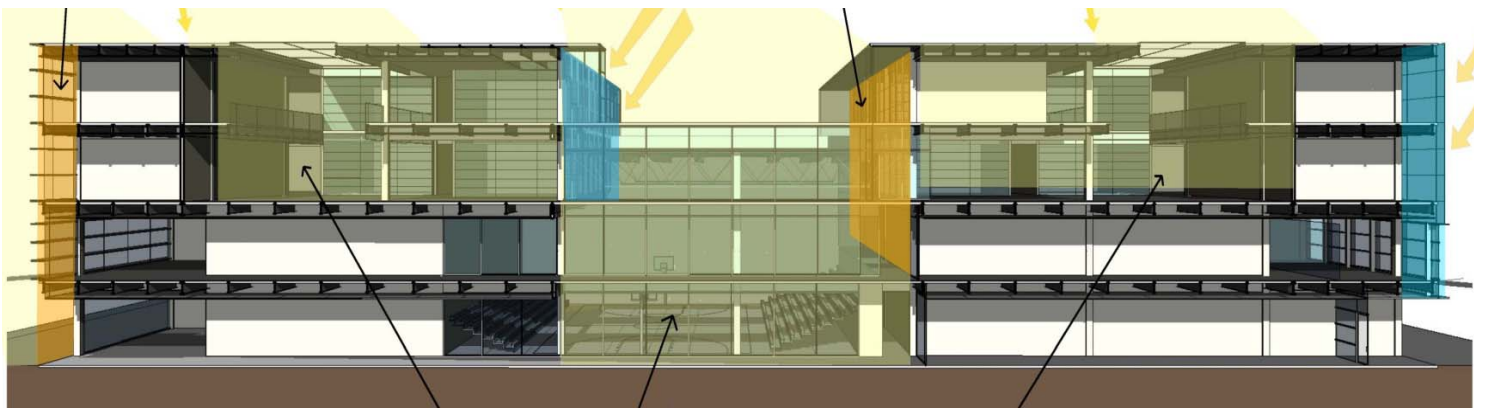
Existing Building Area the equivalent of (8) acres of Property

<u>Existing Building Area =</u>	341,000 so
Building Demolition =	112,400 sf
<u>Building Renovation Area</u>	
Ground Floor Area =	71,000 sf
Second Floor Area =	42,660 sf
Third floor Area =	58,680 sf
<u>Fourth Floor Area =</u>	<u>56,680 sf</u>
Subtotal	229,020 sf



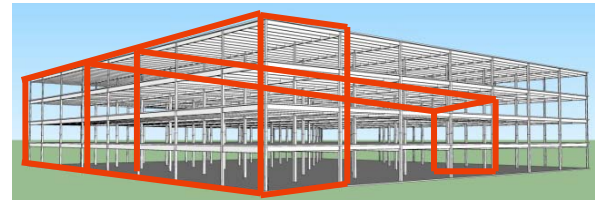
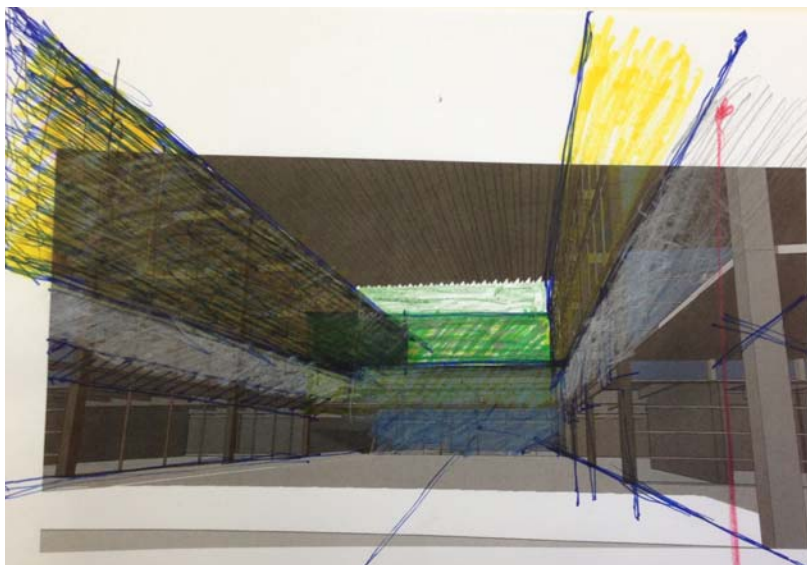
\$68 Million Project Budget

**WISEBURN SCHOOL DISTRICT
HAWTHORNE, CA**



Conversion of an Existing Aerospace Office Building ...into a New High School
"Vertical Campus", from an "introverted box" ...

.....into a Living, Breathing Place



TAILORED DEMOLITION

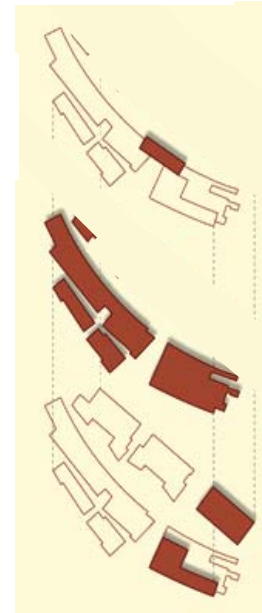


CIVIC ARCHITECTURE

LEARNING CENTERS
COMMUNITY LIBRARIES
PERFORMING ARTS CENTRES
COMMUNITY CENTERS
SPORTS FACILITIES







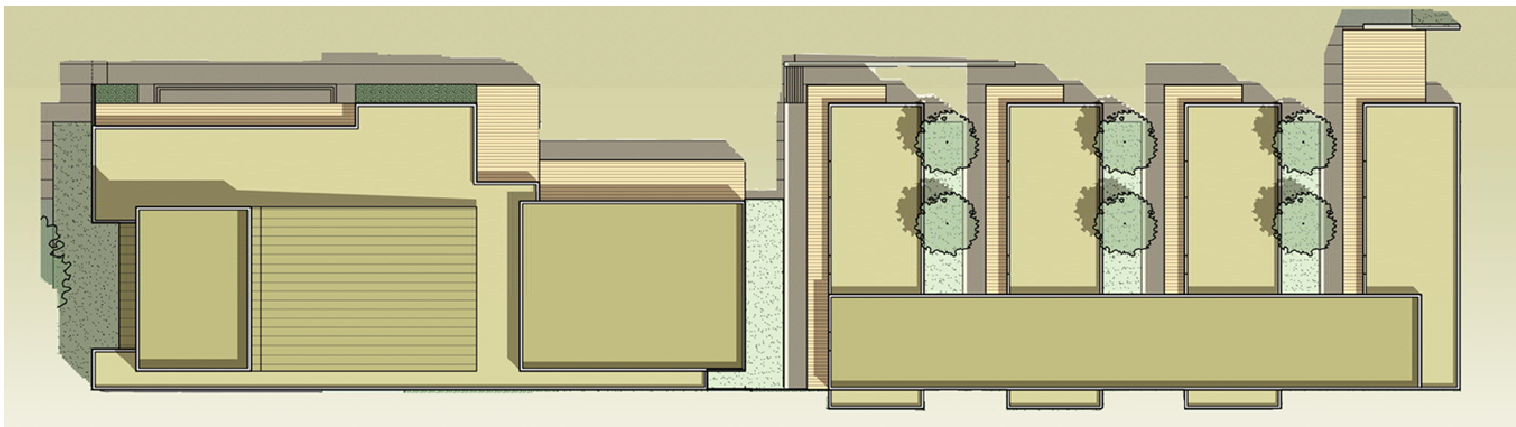
PHASED CONSTRUCTION

SOUTHWEST COMMUNITY SPORTS CENTER
Albuquerque, New Mexico



**MOUNT PLEASANT
PERFORMING ARTS CENTER**
San Jose, CA



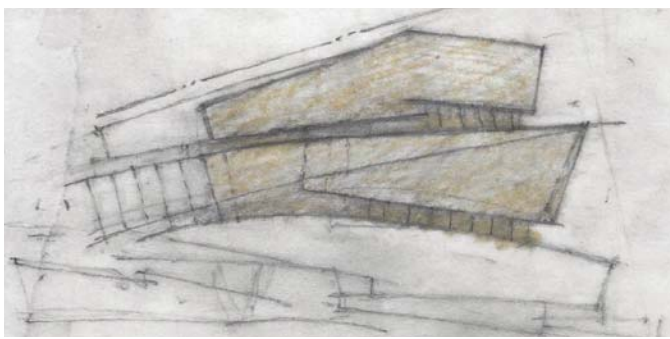
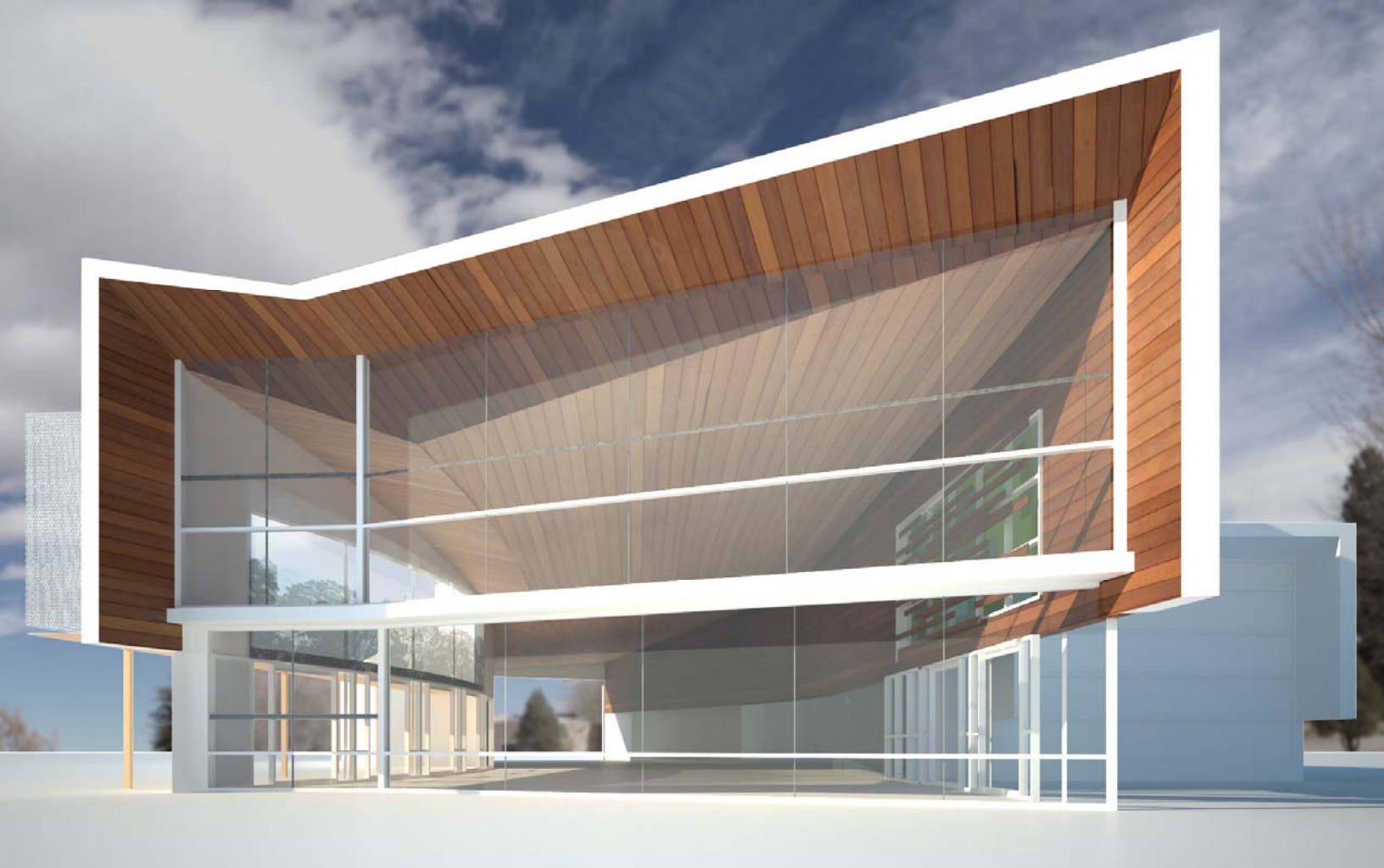




SOUTHWEST MESA PERFORMING ARTS CENTER
Albuquerque, New Mexico

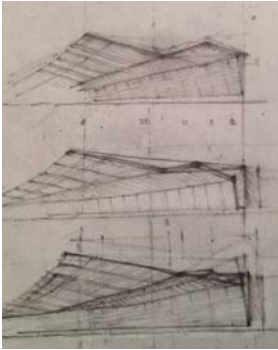


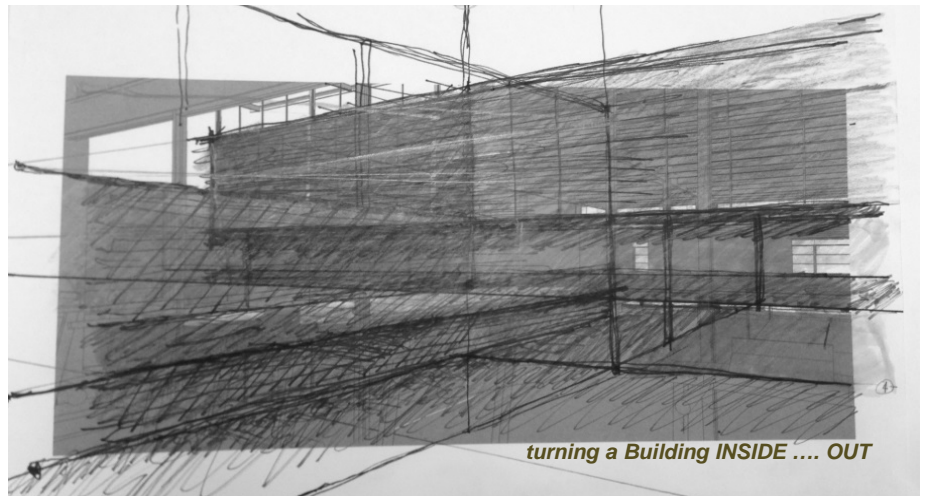
ATRISCO COMMUNITY LEARNING CENTER LIBRARY
Albuquerque, New Mexico



COMMUNITY CENTER
Delano, CA

Construction 2016





turning a Building INSIDE OUT

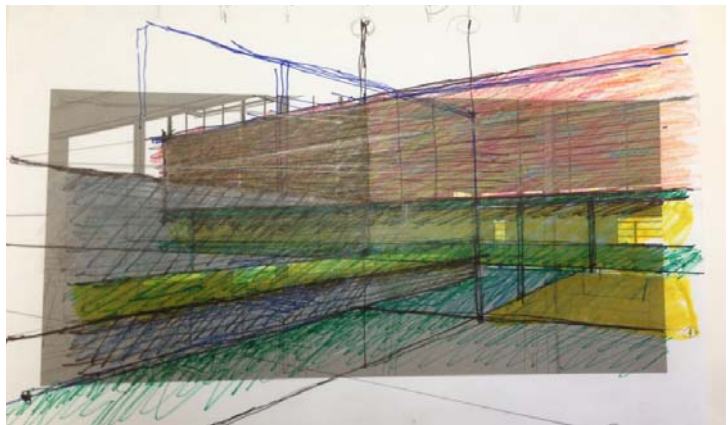


BUILDING REVITALIZATION
TRANSFORMING EXISTING BUILDINGS

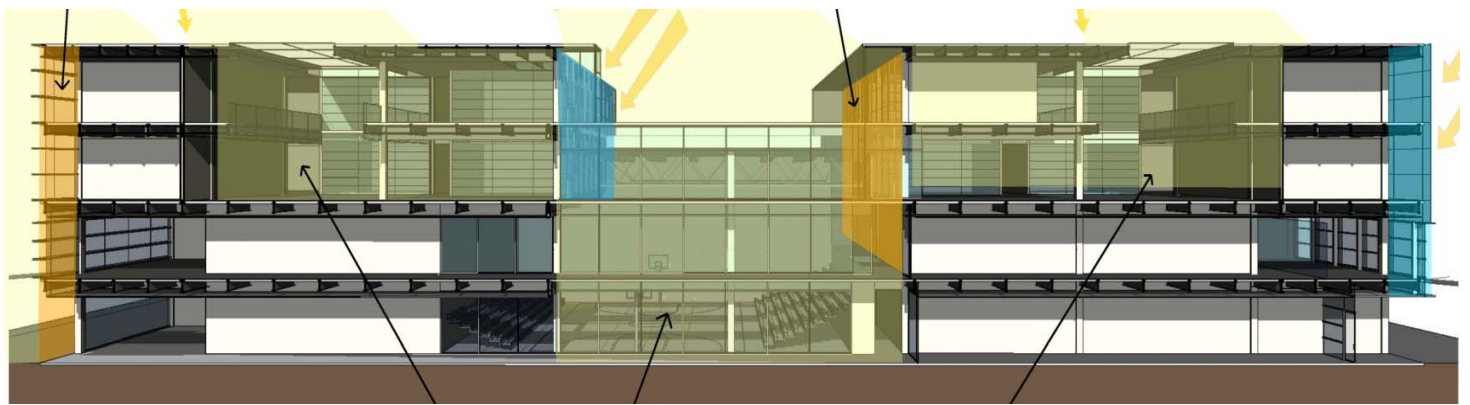


Existing Building Area *the equivalent of (8) acres of Property*

Existing Building Area =	341,000 sf
Building Demolition =	112,400 sf
<u>Building Renovation Area</u>	
Ground Floor Area =	71,000 sf
Second Floor Area =	42,660 sf
Third floor Area =	58,680 sf
Fourth Floor Area =	56,680 sf
Subtotal	229,020 sf

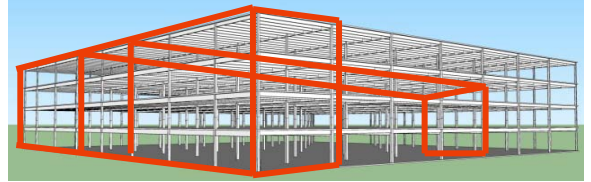
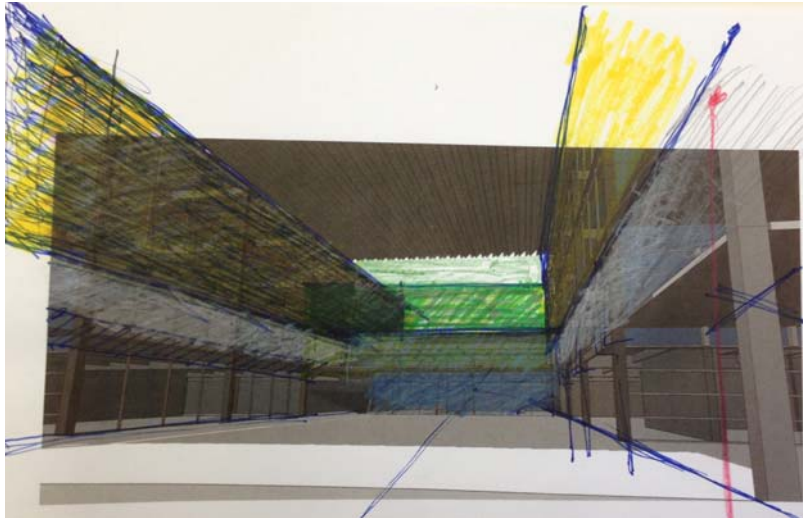


turning a Building INSIDE...OUT

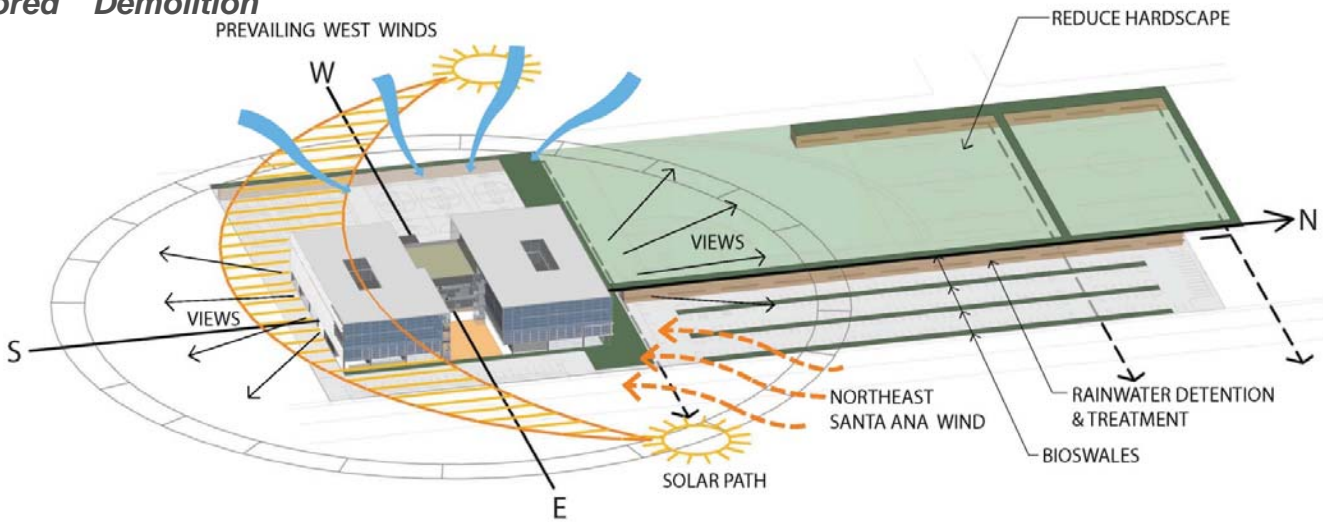


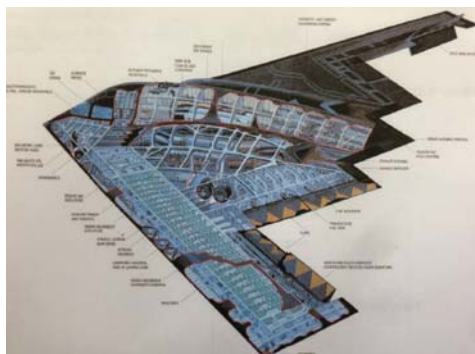
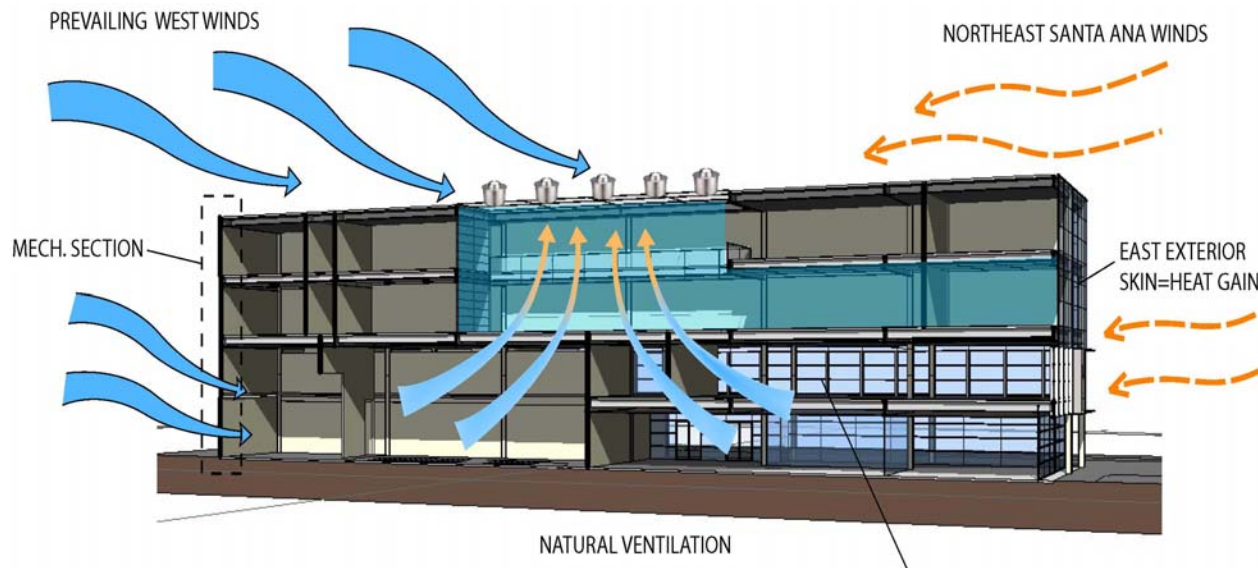
Conversion of an Existing Aerospace Office Building ...into a New High School
"Vertical Campus", from an "introverted box" ...

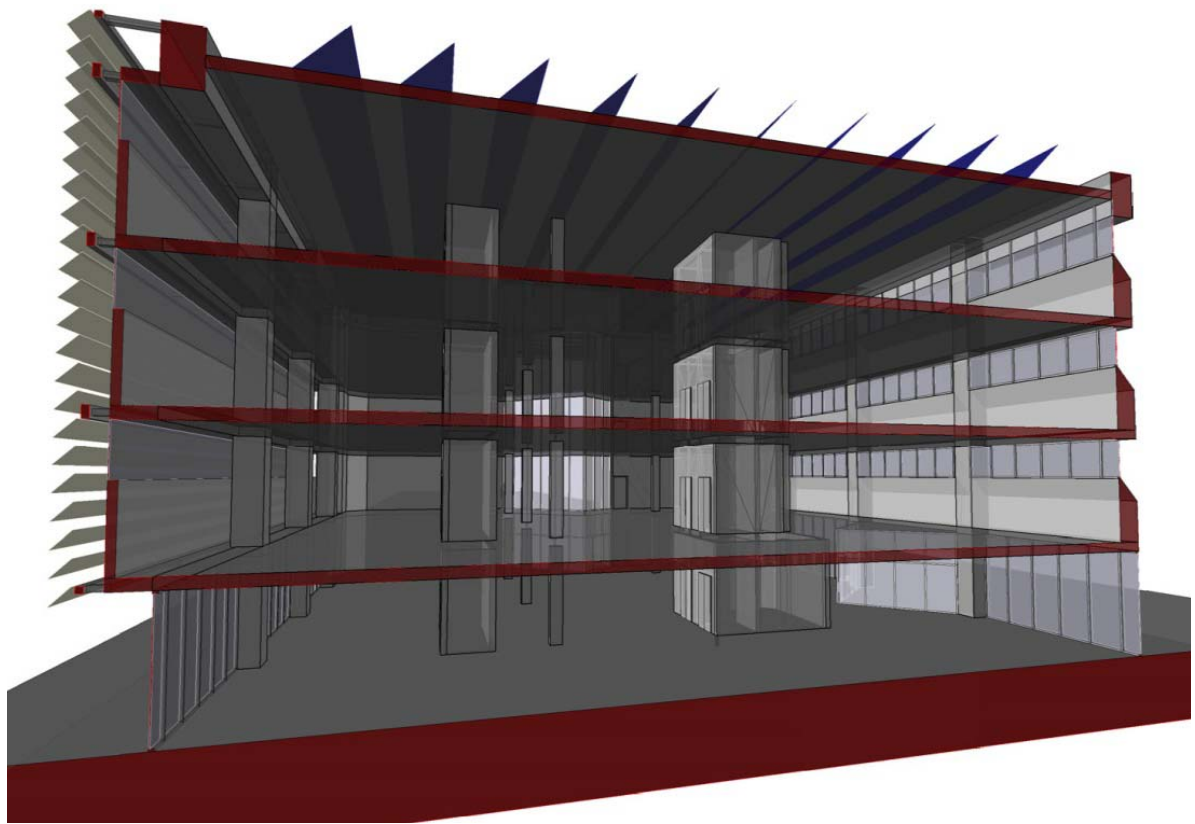
.....into a Living, Breathing Place



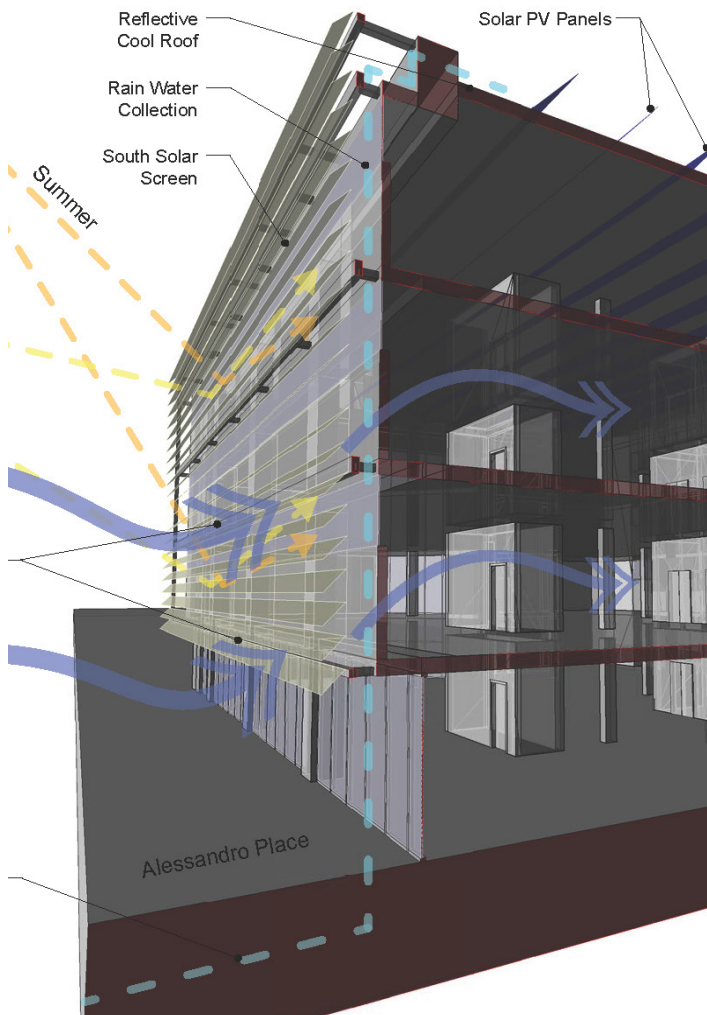
"Tailored" Demolition







STRIPthe BUILDING CLEAN



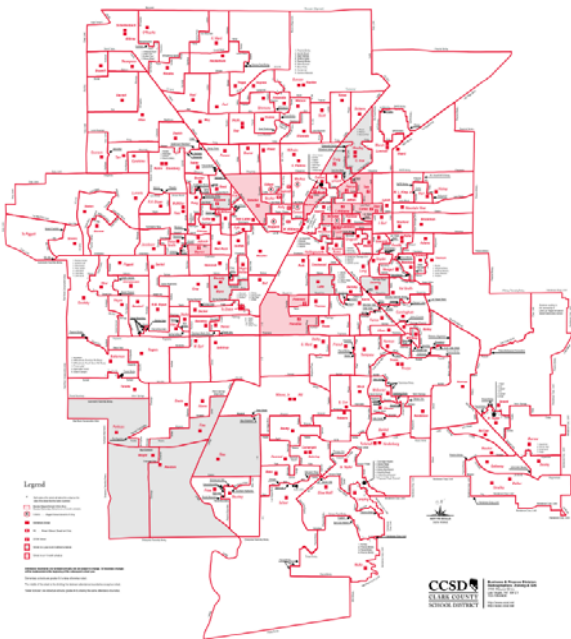
- EXISTING BUILDING**
- Climate Analysis**
- Solar Orientation**
- Building Heat Gain**
- Natural Light Analysis**
- Building Performance**
- Bioclimatic Envelope**
- Cost Benefit Analysis**



**COTTON MEDICAL CENTER
BUILDING REVITALIZATION
Pasadena, CA**



DISTRICT MASTER PLANNING



DISTRICT MASTER PLANNING

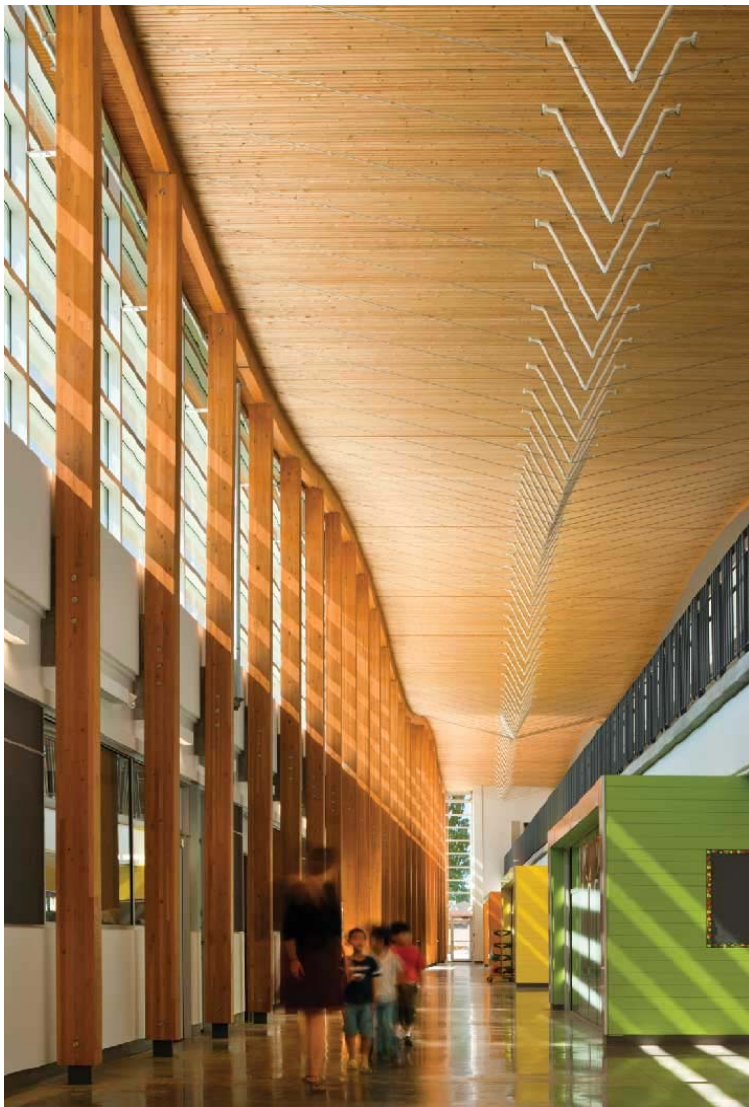
East Side Union High SD	\$720 m
Carlsbad School District	\$315 m
Lennox School District	\$207 m
Wiseburn School District	\$93 m
Wiseburn School District	\$20 m
Clark County School Dist.	\$528 m
Los Angeles Unified SD	\$350 m
Visalia Unified School Dist.	\$156 m
Santa Barbara School Dist.	\$65 m
Dry Creek School District	\$65 m
Central School District	\$80 m
Albuquerque Public School	\$128 m
Richmond School District	\$45 m
Burton School District	\$21 m
Ministry of Education, BC	\$17 m
Hawthorne School District	\$38 m

\$ 2.85 BILLION





CAMPUS PLANNING & DESIGN



HARVESTED "BEETLE-WOOD" LUMBER

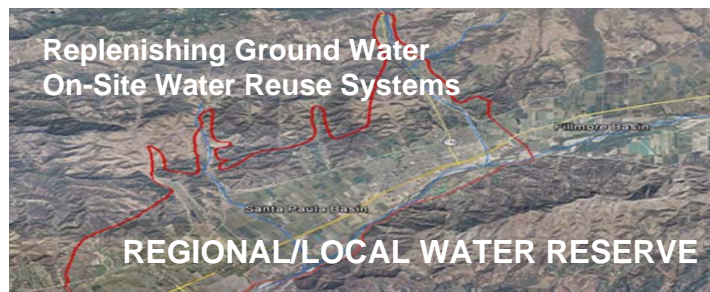


STORM WATER ROOF FILTRATION



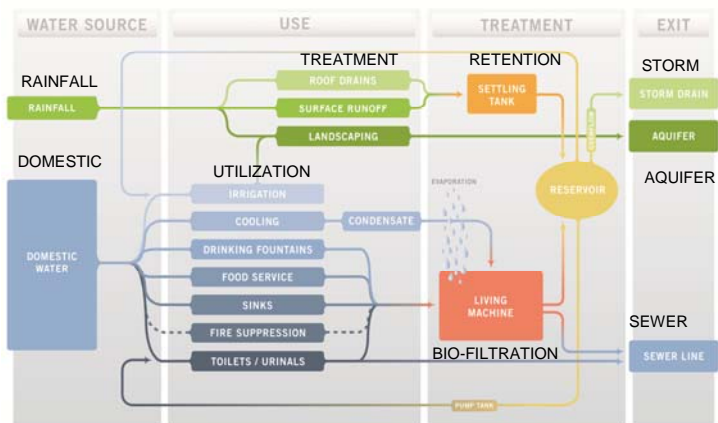
KEEPING OUR FORESTS PUBLIC and SUSTAINABLE

NEW GROWTH FORESTS RETAIN MORE CARBON THAN MATURE TREES
 Utilization of Damaged "Beetle Wood" and controlled new growth forests support the goal of Carbon Neutral Building Construction



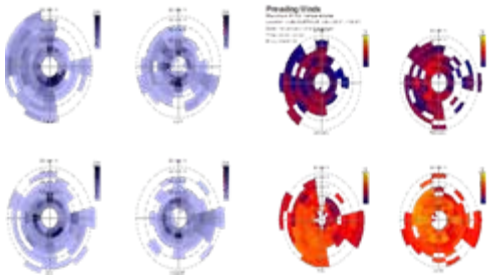
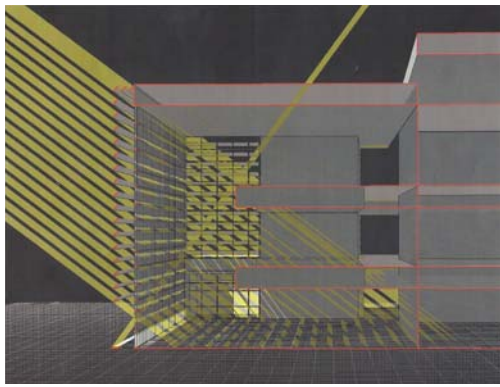
Replenishing Ground Water
 On-Site Water Reuse Systems

REGIONAL/LOCAL WATER RESERVE

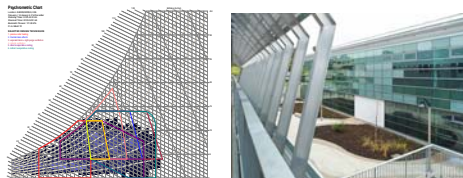
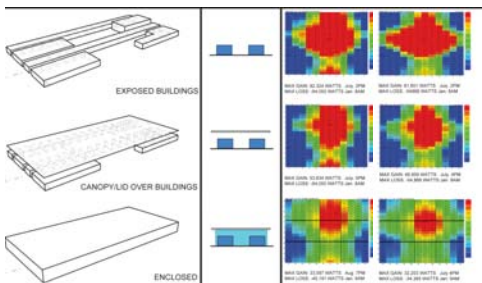


SITE WATER RECLAMATION SYSTEM

ENVIRONMENTAL CONTRIBUTION

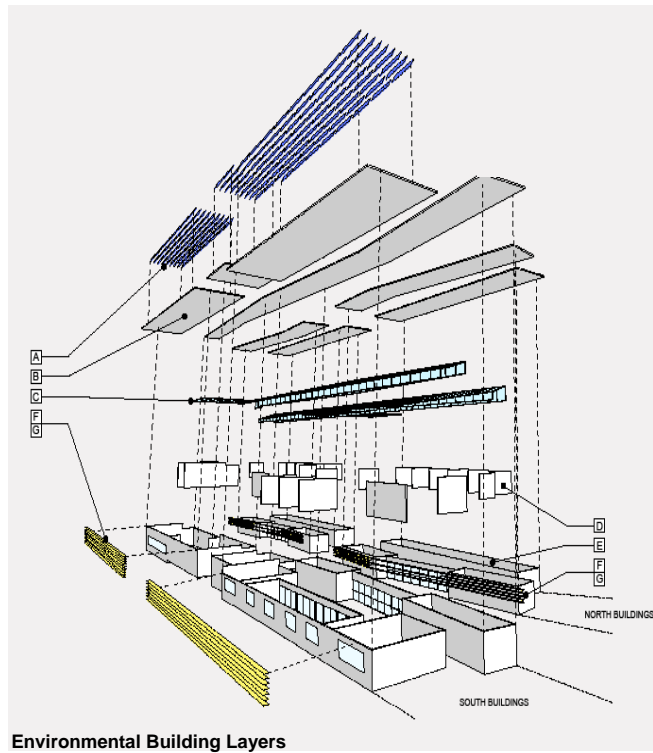


Climate Analysis – Data Driven Design



Building Performance

DESIGN for BUILDING PERFORMANCE



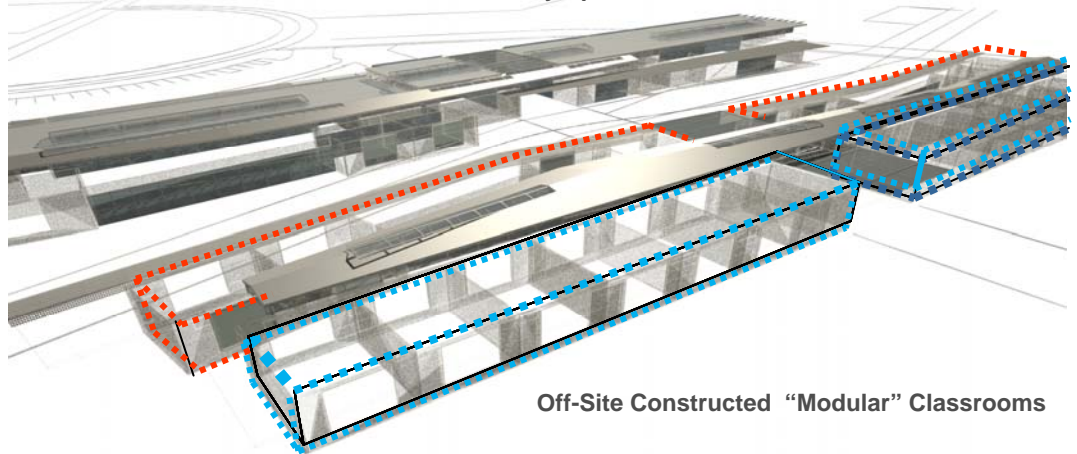
Environmental Building Layers



ON-SITE CONSTRUCTION

OFF-SITE CONSTRUCTION

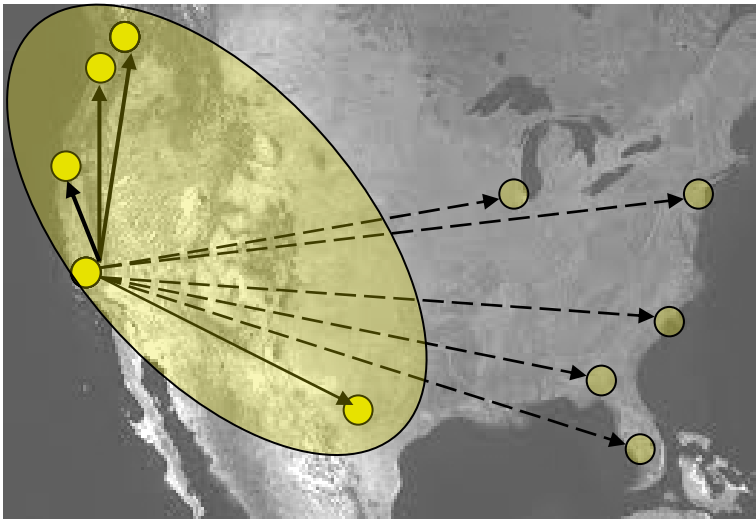
On-Site Construction Common-Use Assembly Spaces



Off-Site Constructed "Modular" Classrooms



SUSTAINABLE CONSTRUCTION



FIRM LEADERSHIP

PRACTICE DEVELOPMENT

- PRACTICE and DESIGN PRINCIPAL
- INTERNATIONAL DESIGN RECOGNITION
- STRATEGIC FIRM and PRACTICE GROWTH
- ENVIRONMENTAL CONTRIBUTION
- NATIONAL FIRM PRACTICE INITIATION
- BUSINESS DEVELOPMENT and EXPANSION
- REGIONAL, NATIONAL, and INTERNATIONAL
- FIRM LEADERSHIP
- FINANCIAL PERFORMANCE
- INTEGRATED DESIGN
- DESIGN/CONSTRUCTION PARTNERING



PROGRAMMING PLANNING LEARNING ENVIRONMENTS

SPEAKING ENGAGEMENTS

“Sustainable School Design” - USGBC
International GreenBuild Conference

“Urban School Planning”
Harvard Graduate School of Design

“Planning and Design for Responsive
Learning Environments”
CEFPI Annual International Conference

“Student-Centered Learning in a Global
Society” CEFPI South West Region

“Relevant Learning Environments”
American Association of School Admin.

“Lessons Learned – Educational Design
in Los Angeles”, The Getty Museum,

“Integrating Curriculum with Interactive
Spaces” Coalition for Adequate School
Housing

“Learning Places in the Urban Fabric”
Coalition for Adequate School Housing

“Cost Effective School Planning & Design
Coalition for Adequate School Housing

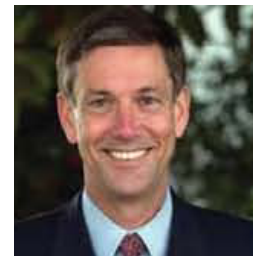
“High Schools for the Future – Today”
ESUHSD Educational Planning Seminar

“High Schools for the Future - on Existing
50-year old Campuses” East Side UHSD



“In recognition of his leadership in California K12 school design, I proudly appointed Wendell Vaughn to the California Department of Education’s “Future Schools” Educational Planning Committee. The team looked to his knowledge, ideas and forward thinking to outline our goals for 21st Century schools for California.”

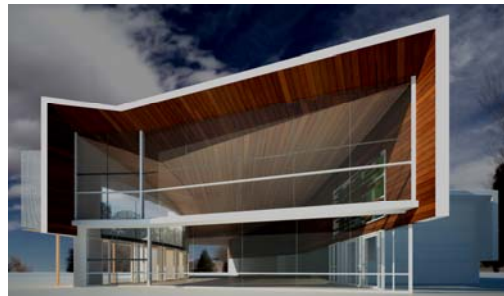
Tom Torlakson
Superintendent of
Public School Instruction



I have known Wendell Vaughn for a number of years and appreciate his continual contributions with my Educational Planning team. I call upon and meet with him to assist in development of our goals and initiatives including relationships with members of the State allocation Board.”

Jack O’Connell
Superintendent of
Public School Instruction





DESIGN INNOVATION TEAM
Adam Seltzner

Mars Expedition's)
Chief Engineer
JPL/NASA

DESIGN RECOGNITION

AMERICAN INSTITUTE of ARCHITECTS
 ARCHITECTURAL INSTITUUTE of BRITISH COLUMBIA
 AIACC CALIFORNIA CHAPTER
 ENVIRONMENTAL DESIGN + CONSTRUCTION
 NATIONAL SCHOOL BOARDS ASSOCIATION
 COUNCIL for EDUCATIONAL FACILITIES PLANNING
 AIACC – COALITION for ADEQUATE SCHOOL HOUSING
 CALIFORNIA HIGH PERFORMANCE SCHOOLS
 VANCOUVER REGIONAL CONSTRUCTION ASSOCIATION
 CONSTRUCTION MANAGEMENT ASSOCIATION AMERICA
 NAIOP NEW MEXICO
 BRITISH HYDRO POWER, BRITISH COLUMBIA
 SACRAMENTO BUSINESS JOURNAL

EXCELLENCE IN DESIGN RECOGNITION *from a diverse Range of professional organizations has supported development of professional collaboration and services Models for strategic growth and relevancy within the Profession.*

**look outside the norm
 to CREATE the NOW**

Wendell Vaughn, AIA, LEED BD+C

Wendell Vaughn Architecture + Planning
Founding Partner
Managing/Design Principal



Wendell Vaughn, has been acknowledged for his contribution in Design and Planning innovation, with a proven history of strategic practice development, financial performance and team mentoring. His clients' projects have been recognized within California, nationally, and internationally for responsive design consciousness, environmental contribution, and cost effective realization.

With more than 30 years of experience, Wendell provides each project team with a collegial, knowledge based leadership approach supported with a deeply rooted commitment to responsibly serve each client's unique goals. Teams led by him have completed planning and design services for projects representing over \$3.2 billion, comprehensive Master Planning services.

Wendell has based his career on the fundamental belief that the most important service an architect can offer is the "ability to Listen, Learn, and Respond" to each client's goals and ideas into a cohesive design.

EDUCATION

California State Polytechnic University,
Pomona
Bachelor of Architecture, 1987

REGISTRATIONS

California Architect: License #C-24697
American Institute of Architects,

Leadership in Energy and Environmental
Design LEED BD+C

PROFESSIONAL AFFILIATIONS

American Institute of Architects

United States Green Building Council
(USGBC)

California State Superintendent of Public
School Educational
Planning/Design Committee –
Appointed by State Superintendent's
-Tom Torlakson/Jack O'Connell

Innovate Pasadena

Association for Learning Environments
International

California State Polytechnic University,
Pomona -visiting critic

University of Southern California School of
Architecture -visiting critic

Board of Trustees, Crestview Preparatory
School

PLANNING & DESIGN RECOGNITION

He has been an invited speaker for responsive community planning, design, and project implementation, as well as environmental design nationally and internationally. He maintains a passionate commitment to each community his teams proudly serve.

CLIENTS' PROJECTS have been recognized with awards from the:

- American Institute of Architects
 - United States Green Building Council (USGBC)
 - Architectural Institute of British Columbia
 - National School Board Association
 - Council of Educational Facility Planners International
 - American Association of School Administrators
 - Coalition of Adequate School Housing
 - Sacramento Business Council
- Numerous Publications

PRACTICE LEADERSHIP

Vaughn Williams Architecture + Planning, 2011- present
Founding Partner, President

Perkins + Will 2001-2011
Principal, Educational Practice Leader
Western Region, United States & Canada

the Blurock Partnership 1996-2001
Design Principal

Thomas Blurock Architects 1990-1996
Design/Project Architect

PUBLICATIONS & SPEAKING ENGAGEMENTS

**“Sustainable School Design” - International GreenBuild Conference
USGBC Conference, Phoenix, Arizona**

**“Urban School Planning” - Harvard Graduate School of Design
Design Professionals Symposium, Harvard University**

**“Planning and Design for Responsive Learning Environments”
CEFPI Annual International Conference, San Diego, California,**

**“Student-Centered Learning in a Global Society”
CEFPI South West Region Conference, Santa Fe, New Mexico,**

**“Collaboration for Innovative Learning Environments”
American Association of School Administrators (AASA) Conf., San Diego, CA**

**“Lessons Learned - Educational Projects in Los Angeles”, LAUSD
Symposium and Recognition -The Getty Museum, Los Angeles, CA**

**“Integrating Curriculum for Planning Learning Environments in the 21st Century”
Coalition for Adequate School Housing (CASH) Annual Conference**

**“Urban Oasis: Creating Urban Learning Environments”
Coalition for Adequate School Housing (CASH) Annual Conference**

**“Cost Effective Planning and Design for California Public Schools”
Coalition for Adequate School Housing (CASH) Conference**

**“High Schools for the Future – Curriculum/Facilities Planning
ESUHSD Educational Planning Seminar San Jose, CA**

**“High Schools for the Future - on 50-year old Existing Campuses”
East Side Union High School District, San Jose, CA**

***Numerous Profession Publications, as well as Professional Organizations
and Associations Publications within the United States and Internationally.**

AWARDS & RECOGNITION

**2013 AIA Honor Award –San Fernando Valley American Institute of Architects
Wiseburn High School**

**2013 AIA Honor Award -Pasadena Foothill American Institute of Architects
Atrisco Heritage Academy High School**

**2013 Innovation Award - AIBC - Architectural Institute of British Columbia
Brighthouse Elementary School**

**2013 Merit Award -LG British Columbia
Brighthouse Elementary School**

**2013- Design Award - Artsonia Schools
Brighthouse Elementary School**



AWARDS & RECOGNITION (continued)

**2013 - Design Excellence Award - Vancouver Regional Construction Association
Brighthouse Elementary School**

**2012 “Smart Excellence Award” - British Hydro Power, British Columbia
Brighthouse Elementary School**

**2010 Environmental Design+Construction Magazine, 2010 Excellence in Design Award
Creekview Ranch Middle School**

**2010 CEFPI School Planning & Architectural Exhibition Awards, Design Concept Award,
Atrisco Heritage Academy High School**

**2010 Award of Excellence, Education, NAIOP New Mexico Chapter,
Atrisco Heritage Academy High School**

**2009 National School Boards Association, Exhibition of School Architecture: Grand Prize
Atrisco Heritage Academy High School**

**2009 AIA Honor Award American Institute of Architects Pasadena Foothill
Atrisco Heritage Academy High School**

2009 CASH Design Excellence Award, Helen Bernstein High School

**2009 National School Boards Association, Exhibition of School Architecture Grand Prize:
Atrisco Heritage Academy School**

**2009 Highest Ranked High Performance K12 School,
Creek View Ranch Middle School, High Performance Schools, California State School Facilities Program**

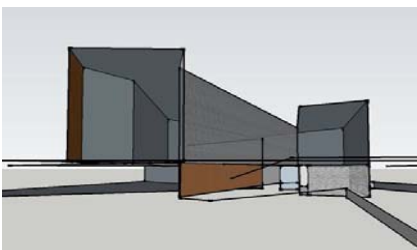
**2009 Structural Engineers Association of Central California, Grand Prize Winner, Excellence in Structural Engineering Award,
Creek View Ranch Middle School**

**2008 American Institute of Architects San Fernando Valley Chapter,
Atrisco Heritage Academy High School**

**2008 Sacramento Business Journal, Real Estate Projects 2008, Best New Public Project,
Creekview Ranch Middle School**

**2007 Construction Management Association of America, Project Achievement Award, constructed value less than \$50 million,
Frank del Olmo Elementary School**

**2005 AASA/AIA/CEFPI, Citation Award LAUSD
Helen Bernstein High School**



AWARDS & RECOGNITION *(continued)*

**2004 Design Excellence Award: American Association of School Administrators,
Helen Bernstein HS**

**2004 AIA Design Award American Institute of Architects Pasadena Foothill
Helen Bernstein High School**

**2002 Award of Honor: CASH/AIACC Leroy F. Greene Design Award
Helen Bernstein High School**

**2002 Award of Excellence: CASH/AIACC Leroy F. Greene Design Award
Roosevelt Elementary School**

**Projects completed as Design Principal with Vaughn Williams, Perkins+Will*

SUSTAINABLE PROJECT DESIGN RECOGNITION

**AIA Design Award – Sustainable Design
Wiseburn High School**

Creek view Ranch Middle School

LEED Gold Certification

**Creek view Ranch Middle School
School 2009 – “Highest Ranked Project**

California High Performance

Brighthouse Elementary School

LEED Gold Certification

**Sustainable “Prototype” School
*Design reduction of 71% annual energy
Consumption Construction Cost Reduction 27%***

Clark County School District

**Northwest Elementary School
California High Performance Schools Funding**

CA High Performance Schools



EDUCATIONAL PROJECTS

WIESBURN HIGH SCHOOL

WISEBURN DISTRICT PLANNING

SANTA PAULA K-8 SCHOOL

ATRISCO HERITAGE ACADEMY HIGH SCHOOL*

CARLSBAD HIGH SCHOOL*

NORTHWEST K-8 SCHOOL*

CREEK VIEW RANCK MIDDLE SCHOOL*

FRANK del OLMO ELEMENTARY SCHOOL*

BRIGHOUSE ELEMENTARY SCHOOL*

WESTPARK AREA HIGH SCHOOL

•Projects Completed as Design Leader, Principal with DLR Group

PITT RIVER MIDDLE SCHOOL*

•Projects Completed as Design/Managing Principal with Perkins + Will

CIVIC PROJECTS

DELANO COMMUNITY CENTER

WISEBURN COMMUNITY SPORTS CNETER

SOUTHWEST MESA COMMUNITY SPORTS CENTER *

MOUNT PLEASANT PERFORMING ARTS THEATRE*

ATRISCO COMMUNITY CENTER*

SOUTHWEST COMMUNITY LEARNING MEDIA CENTER LIBRARY*

EI DIAMANTE PERFORMING ARTS

Photography Credits –
New York Focus photographers



STUDIO Suite G ...the Shop

Wendell Vaughn
ARCHITECTURE+PLANNING

Wendell Vaughn, AIA, LEED BD+C
Principal, Founding Partner

626-695-4225

wvaughn@vaughnarc.com

VaughnArchitecturePlanning

email

web